



ST CATHERINE'S SAILING CLUB

REVISED SAILING PLAN - LEVEL 1

AUGUST 2020



Coronavirus:

Return to
Sailing Plan

UPDATED PLAN – LEVEL 1

With the success of our return to sailing programme and the large numbers of members enjoying some fantastic sailing at the Club, we must all continue to play our part in following the current guidelines to mitigate against the spread of the coronavirus, particularly as many members are now travelling off Island. Under the current guidelines we can now enjoy the use of our Clubhouse facilities, provided that we follow the guidance laid out in this presentation. The need for 1m social distancing, together with the need to mitigate against the risks through surface contamination, continue to be the main factors for us to take into consideration going forward. Group numbers on Club premises should not exceed 40 people, which means that gatherings such as prize giving's may not be possible at this time.

IMPORTANT UPDATE - A last minute change of the Government guidelines advises that '**Close Fleeting Contact**' sport can now take place outdoors, but not '**Close Contact**' at this time as previously communicated. This unfortunately means that the crewing of Double Handed boats will only be possible for members of the same family or household for the time being.

'Face to Face' interactions with members of different households are to be avoided.

As a polite reminder to those of you who have been off Island, please do not visit the Club for any reason until the results of your test have been confirmed as negative.

Please take time to view this presentation in preparation

SIGNING ON



Webcollect

- Please enter races online via Webcollect so that the Race Committee and House Committee have an idea of numbers prior to the event

Please Continue to Sign On

- All participants must sign on with the Beachmaster, to inform the Race Officials of who is afloat as normal, but also to create an official record of individual participation for contact tracing requirements.

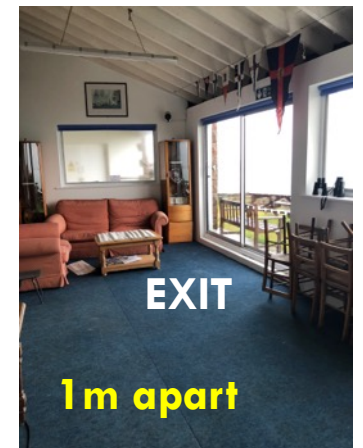


A member of the Race Committee will make themselves known for signing in

CLUBHOUSE

- The Clubhouse will be open to members with the requirement for 1m social distancing.
- Sailors under the age of 13, may be grouped in 'Bubbles' without the need for social distancing.

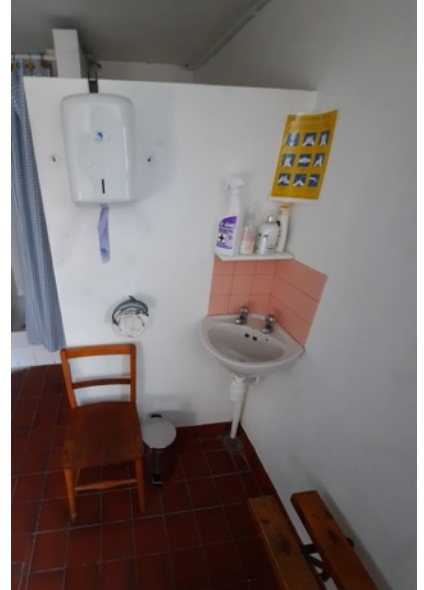
- The Clubhouse is now open for our usual activities. Due to the confined space however, please still avoid large social gatherings. 1m social distancing must be maintained at all times.
- If you do need to enter the Clubhouse, a one-way system will be in place, with entry via the front door and **exit via both patio doors**.
- The Galley is for use by one person only from the House Committee or Training course Leaders.



CLUBHOUSE HYGIENE



- We are all required to periodically clean handles and surfaces in and around the Clubhouse, as and when necessary.
- Please wipe clean parts of any Club equipment or facilities used after use e.g. hose tap and nozzle.
- Sanitiser and other cleaning materials will be made available in and around the Clubhouse



FIRST AID

- Assistance with any first aid requirements should be conducted verbally and self-administered by the casualty where possible.
- Direct assistance should only be given where it is judged to be appropriate or necessary. The wearing of a mask or other PPE may be required.
- If a sailor becomes ill during an activity, please follow the guidance on the 'SCSC Sailor Illness Procedure' form. [Link](#)



TOILETS & CHANGING ROOMS

Changing Rooms can now be used within the limited areas as marked out, to ensure 1m social distancing.

- Toilets can be used by **one person** at a time using the **traffic light system** on the door.



- Handles and surfaces must be cleaned by the individual after use.
- Sanitiser and wipes will be made available, with a bin for disposal.



PREPARING FOR SAILING



- Where possible, sailors should still arrive at and leave the Club dressed for sailing due to limited changing space.
- Sailors must ensure that their dinghy is in a good condition to sail, with appropriate maintenance carried out prior to the session.
- A 3m to 4m painter should be attached to the boat as a throw line for swift retrieval.
- Sailors should be physically fit and medically well enough to embark on the sailing activity.
- **Double handed boats** must be crewed by members of the same family or household.

Please view the current guidance from the RYA:

[guidance for a return to boating for crew from different households](#)

CLUB BOATS

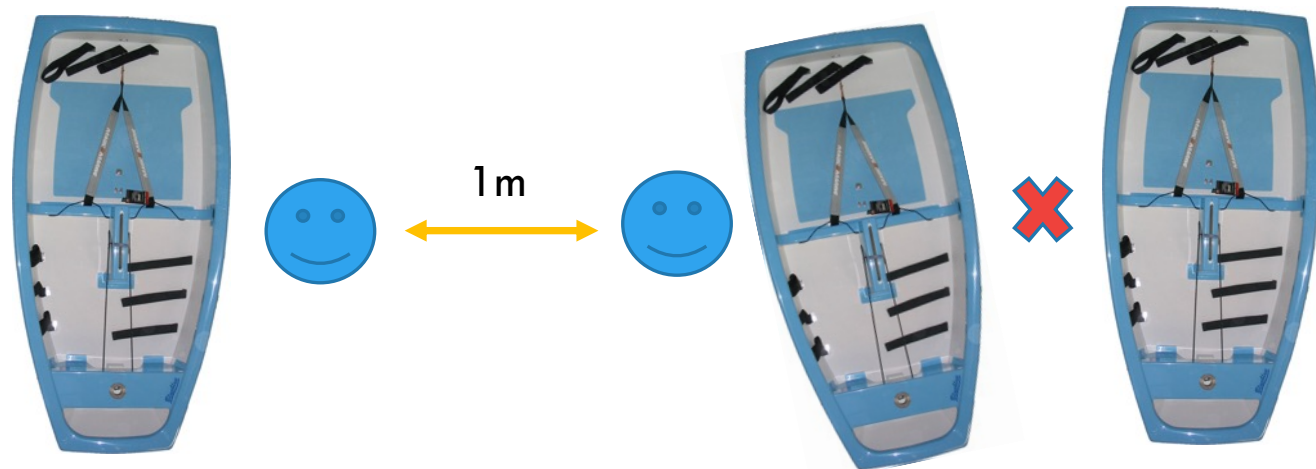


- The full fleet of Club boats are now available for use by members.
- Feva's and Pico's with jibs must be crewed by members of the same family or household.
- Please report any breakages to a Club Officer.
- The crew of Club boats are responsible for the cleaning of all contact surfaces and equipment after the sailing session, taking into account when the boat will be used next.

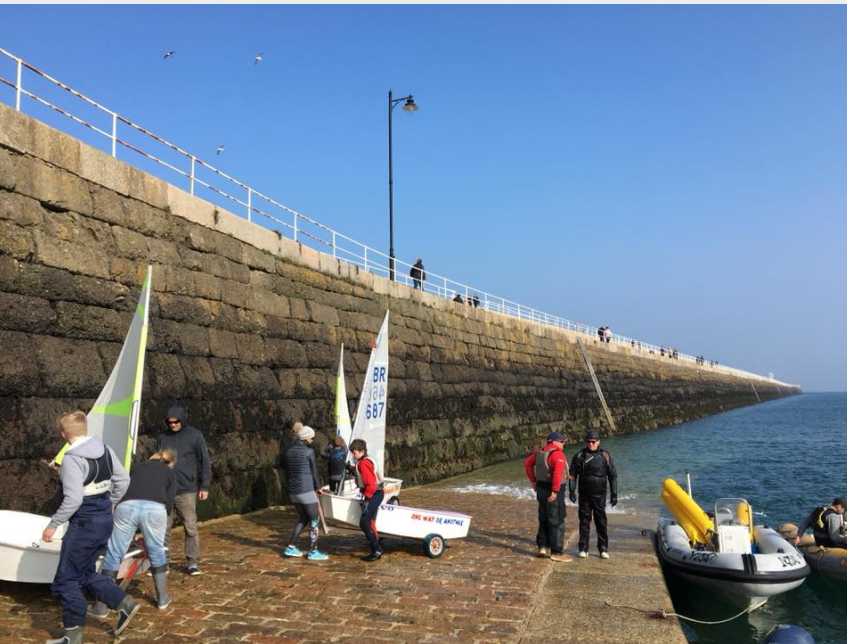
RIGGING



- Rigging must take place on the slip with more than 1m between each sailor rigging a boat.
- Public presence – please ensure a 1m distance is kept from members of the public.



LAUNCHING & RETRIEVAL



- Sailors should keep a 1m distance from other sailors and members of the public at all times.
- The use of a throw line to retrieve trolleys from single handed sailors may be available to avoid 'Face to Face' interactions.
- Assisted launching & retrieval can be carried out by a group provided that each group member is 1m apart.
- Assisted launching & retrieval using the trolley handles should only be conducted by a family member or member of the same household.
- Sailors should wait until there are less than 3 boats waiting to be retrieved before sailing into the slipway.

SAILING



- Racing will be at the discretion and control of the Race Officer, with careful consideration to the risks involved and the need to maintain a social distance of 1m.
- Please stand 1m apart for any briefing held, unless from the same household
- Follow the instructions given to you by the Race Officer. The RO will make a decision on whether the race will take place or not in relation to the weather conditions and will communicate any measures to avoid congestion or 'Pinch Points'.
- Full competitive sailing may now resume.
- Boats should however, not come alongside each other where possible.

RIB SAFETY COVER



- Support will continue to be provided from a suitable distance, communicating instructions and advice from a distance of over 1 m.
- Assistance with the righting of a capsized dinghy can be achieved through the usual methods, mast head lifting whilst scooping the sailor into the boat. A 1 m distance should be kept at all times.
- If you need to be towed in, please remain sitting in your boat.
- If you must leave your boat for the safety of the RiB, you should position yourself in the bow or stern of the RiB, keeping a 1 m distance from the crew.
- RiB crews should be crewed by members of the same family or household. Where this is not possible the crew should practice social distancing by sitting 1 m apart.

SUMMARY



- Facilities – The Clubhouse and Changing rooms will be open for use with a requirement for 1m social distancing and the cleaning of surfaces as laid out in this plan.
- Group numbers on Club premises should not exceed 40.
- Sailing – following last minute changes to the guidance for Level 1 the Government guidelines for ‘Close Fleeting Contact’ sport, require **Double Handed Boats** to be crewed by **members of the same family or household** as for Level 2 (amended from previous plan posted).
- Sustained ‘Face to Face’ interactions must be avoided.

Your continued participation and due diligence in achieving the guidance within this presentation would be very much appreciated.

Happy Sailing!

Dave Jones - Commodore