



ST. CATHERINE'S SAILING CLUB

Club Racing - Season 2019
Organised by the St. Catherine's Sailing Club (SCSC)
Jersey

SAILING INSTRUCTIONS

1. RULES

- 1.1 The regatta will be governed by the rules as defined in *The Racing Rules of Sailing*.
- 1.2 The following documents will apply:
 - 1.2.1 The Royal Yachting Association prescriptions in effect from 1 January 2019.
 - 1.2.2 Class rules as issued by class associations for competing boats except that in the manufacturer's one design classes replica sails may be used with the Sailing Committee's approval
- 1.3 Racing rule 40 will be changed as follows: Competitors shall wear personal flotation devices at all times while afloat.

2. NOTICES TO COMPETITORS

Notices to competitors will be posted on the official notice board(s) located in the SCSC clubhouse.

3. CHANGES TO SAILING INSTRUCTIONS

Any change to the sailing instructions will be posted 30 minutes before the scheduled first race on the day it will take effect, except that any change to the schedule of races which will be posted by 2000 on the day before it will take effect.

4. SIGNALS MADE ASHORE

- 4.1 Signals made ashore will be displayed from the flag pole of the SCSC start hut.
- 4.2 When flag AP is displayed ashore, '1 minute' is replaced with 'not less than 30 minutes' in the race signal AP.

5. SCHEDULE OF RACES

- 5.1 The dates of racing and number of races in each day are described in the SCSC Sailing Programme 2019 and SCSC Regattas Programme 2019 as published in the SCSC website www.scsc.org.je.
- 5.2 Reserve days may be used if races are not completed as scheduled. These are depicted on the SCSC Sailing Programme 2019.

6. CLASS FLAGS

Class flags will be:

| | |
|-----------------------------|----------|
| <i>Fast Handicap Racing</i> | <i>F</i> |
| <i>Slow Handicap Racing</i> | <i>B</i> |
| <i>Open Handicap Racing</i> | <i>O</i> |



ST. CATHERINE'S SAILING CLUB

Flag O will be used for class racing unless alternative class flags are prescribed by change to the Sailing Instructions following procedure on Instruction 3 above.

7 RACING AREAS

Racing will take place in St Catherine's Bay and surrounding waters in Jersey.

8 THE COURSES

8.1 Courses for races started from the SCSC start hut shall be indicated by boards hung from the wall in front of the Club with the corresponding letter on the board and approximate location of each mark is described in Attachment C. The course shall be read left to right, the background colour of the letter indicates the side to which the mark shall be left, red indicates to port and green indicated to starboard.

The use of Average Lap time races will be indicated by boards showing X followed by A.

The use of Multiple Lap races will be indicated by boards showing X followed by a numeral (e.g. 2) indicating the number of laps.

8.2

8.2.1 Courses for races started from a Race Committee boat (RC boat) shall be indicated by either:

Boards hung on the RC boat with the corresponding letter on the board and approximate location of each mark is described in Attachment B.

The course shall be read left to right, the background colour of the letter indicates the side to which the mark shall be left, red indicates to port and green indicates to starboard.

OR

By flags displayed in the RC boat indicating the course as described in Attachment A of these Sailing Instructions.

8.2.2 The use of Average Lap time races will be indicated by a board showing the letter A.

The use of Multiple Lap races will be indicated by a numerical board (e.g. 2 for 2 laps).

8.3

8.3.1 Courses for races started from a Club Support Vessel (Club RIB) shall be indicated by either:

An amendment to the Sailing Instructions posted in the SCSC Notice board(s) as per Instruction 3 above

OR

By flags displayed in the Club RIB indicating the course as described in Attachment A of these Sailing Instructions.

8.3.2 The use of Average Lap time races will be indicated by a board showing the letter A.

The use of Multiple Lap races will be indicated by a numerical board (e.g. 2 for 2 laps).



ST. CATHERINE'S SAILING CLUB

9 MARKS

- 9.1 Course Marks will be tall cylindrical yellow. Fixed navigation marks or beacons may also be used
- 9.2 When used, the starting and finishing marks will be short cylindrical orange
- 9.3 A race committee boat signaling a change of a leg of the course is a mark as provided in instruction 11.2.

10 THE START

- 10.1 Races will be started by using rule 26 with the warning signal made 5 minutes before the starting signal.

- 10.2 For starts from the SCSC Starter Hut the start line will be a transit between the orange pole and the flag staff in front of the SCSC Starter Hut.

An Outer Limit Mark can be used and will be short cylindrical orange. This mark does not form part of the start line transit

OR

For starts from a Race Committee boat (RC boat), the starting line will be between a staff displaying an orange flag at the starboard end and a starting mark or course mark at the port end of the line.

OR

For starts from a Club Support Vessel (Club RIB) the starting line will be between a staff displaying an orange flag at the starboard end and a starting mark or course mark at the port end of the line.

- 10.3 Boats whose warning signal has not been made shall avoid the starting area during the starting sequence for other races.
- 10.4 A boat starting later than 4 minutes after her starting signal will be scored Did Not Start without a hearing. This changes rule A4.
- 10.5 If flag U has been displayed as the preparatory signal, no part of a boat's hull, crew, or equipment shall be in the triangle formed by the ends of the starting line and the first mark during the last minute before her starting signal. If a boat breaks this rule and is identified, she shall be disqualified without a hearing but not if the race is restarted or resailed or postponed or abandoned before the starting signal. This changes rule 26.

11 CHANGE OF THE NEXT LEG OF THE COURSE

- 11.1 To change the next leg of the course, the race committee will move the original mark (or the finishing line) to a new position.
- 11.2 Except at a gate, boats shall pass between the race committee boat signalling the change of the next leg and the nearby mark, leaving the mark to port and the race committee boat to starboard. This changes rule 28.

12 THE FINISH

- 12.1 For finishes from the Starter's Hut the finish line will be between the flag staff in front of the Starters Hut and the Outer Limit Mark described in 10.2.

OR



ST. CATHERINE'S SAILING CLUB

For finishes from the RC boat or Club RIB, the finish line shall be between the flag staff on the boat with an Orange flag and the windward side of the finish mark.

- 12.2 A boat competing in an average laps race will be finished when she has sailed a whole number of complete laps and crosses the finish line when a BLUE flag is displayed.
- 12.3 When two race classes are finishing on the same Finish Line, for example Gala and Bel Val, when a class flag for one of the race classes (F or B) is displayed under the BLUE flag only boats racing in that class shall be finished as they cross the line.
- 12.4 If the race committee is absent when a boat finishes, she should report her finishing time, and her position in relation to nearby boats, to the race committee at the first reasonable opportunity.

13 PENALTY SYSTEM

- 13.1 The Penalty rules 44.1 and 44.2 will apply.
- 13.2 Appendix P will apply as changed by instruction 13.3
- 13.3 Rule P2.2 and P2.3 will not apply and rule P2.1 is changed so that it will apply to any penalty.

14 TIME LIMITS AND TARGET TIMES

- 14.1 The time limit (excluding pursuit races) for the first boat to finish will be 60 minutes.
- 14.2 In races with boats split into classes (F and B): Boats failing to finish within 20 minutes after the first boat from their class sails the course and finishes will be scored Did Not Finish. This changes rules 35 and A4.1.
- 14.3 In races with Open Handicap: Boats failing to finish within 40 minutes after the first boat sails the course and finishes will be scored Did Not Finish. This changes rules 35 and A4.1.

15 PROTESTS AND REQUESTS FOR REDRESS

- 15.1 Protest forms are available at the race office, located at the Starter Hut. Protests and requests for redress or reopening shall be delivered there within the appropriate time limit.
- 15.2 For each class, the protest time limit is 60 minutes after the last boat has finished the last race of the day or the race committee signals no more racing today, whichever is later.
- 15.3 Notices of protests by the race committee or protest committee will be posted to inform boats under rule 61.1(b)
- 15.4 Notices will be posted no later than 30 minutes after the protest time limit to inform competitors of hearings in which they are parties or named as witnesses. Hearings will be held in the protest room, located as defined in the Notice Board of the SCSC,



ST. CATHERINE'S SAILING CLUB

- 15.5** A list of boats that, under instruction 13.3, have been penalized for breaking rule 42 will be posted.
- 15.6** Breaches of instructions 17, 20, 21, 22 and 23 will not be grounds for a protest by a boat. This changes rule 60.1(a). Penalties for these breaches may be less than disqualification if the protest committee so decides.
- 15.7** On the last scheduled day of racing of a series a request for reopening a hearing shall be delivered
- (a) Within the protest time limit if the requesting party was informed of the decision on the previous day;
 - (b) No later than 30 minutes after the requesting party was informed of the decision on that day.
- This changes rule 66.
- 15.8** On the last scheduled day of racing of a series a request for redress based on a protest committee decision shall be delivered no later than 30 minutes after the decision was posted. This changes rule 62.2.
- 15.9** Decisions of the protest committee will be final as provided in rule 70.5.

16 SCORING

- 16.1** The scoring system is as follows: Low Point System as described on Appendix A of *The Racing Rules of Sailing*
- 16.2** 2 races are required to be completed to constitute a series.
- 16.3**
- (a) When fewer than 4 races have been completed, a boat's series score will be the total of her race scores.
 - (b) When 4 or more races have been completed, a boat's series score will be the lowest whole number exceeding half the number of races sailed.

17 SAFETY REGULATIONS

- 17.1** Check-Out and Check-In: Each boat shall sign-out before going afloat and sign-in when returning ashore using the sign-in sheet provided in the Race Office
- 17.2** A boat that retires from a race shall notify the race committee as soon as possible.

18 REPLACEMENT OF CREW OR EQUIPMENT

- 18.1** A competitor shall sail a series in one class of boat. If a competitor changes class during a series he/she shall be regarded as two separate entries and scored accordingly. When a competitor uses different boat of the same class or a different sail number in a series he/she shall not be penalised and scored as one entry.
- 18.2** Where more than one series are amalgamated to produce a result as for the Mavourneen or Bery Malco series, the score for each sailor will be based on just one class of boat sailed. In cases where a sailor has competed in different classes these will be considered separate entries and scored accordingly.
- 18.3** A helmsman of a two man boat may change crew between any races in the series. A team of two sailing a two man boat may share the helm during the series, however if this is the case and either member of the team sails with another helmsman in the same boat they will be regarded as a separate entry.



ST. CATHERINE'S SAILING CLUB

A team of two sharing a helm will both be considered for qualification to the club championships.

18.4 A team sharing the helm must nominate to the results officer a principle helmsman for the purpose of the Hardy/Macready Cup qualification.

18.5 Where a team share the helm or a helmsman sails mostly with one crew, both members of the partnership will be recognised in awarding prizes

19 EQUIPMENT AND MEASUREMENT CHECKS

A boat or equipment may be inspected at any time for compliance with the class rules and sailing instructions.

20 EVENT ADVERTISING

Boats may be required to display advertising chosen and supplied by the organizing authority. This will be supplied and instructed at the time of entry of each competitor.

21 SUPPORT BOATS

21.1 Team leaders, coaches and other support personnel shall stay outside areas where boats are racing from the time of the preparatory signal for the first class to start until all boats have finished or retired or the race committee signals a postponement, general recall or abandonment.

22 TRASH DISPOSAL

Trash may be placed aboard support or official boats.

23 RADIO COMMUNICATION

Except in an emergency, a boat shall neither make radio transmissions while racing nor receive radio communications not available to all boats. This restriction also applies to mobile telephones.

24 PRIZES

Prizes will be given as follows: All full list of St Catherine Sailing Club trophies and prizes can be found under Attachment C of these Sailing Instructions.

25 AGES

A competitor's age will be taken as his or her age on the 1st of January 2019.

26 JUNIOR COMPETITORS

26.1 A competitor in a club event shall be considered a junior and eligible for junior prizes if he/she is under 18 years old on 1st of January 2019.

26.2 Where a double-handed boat is sailed, both helm and crew must class as a junior in order to receive the junior prize.

27 HANDICAPS

27.1 Club racing is open to all boats of classes listed on the SCSC Handicap List 2019 as published on the club website.



ST. CATHERINE'S SAILING CLUB

27.2 Boats without a handicap published on the aforementioned list should contact a member of the Sailing Committee 24 hours prior to the race start in order for a number to be allocated.

27.3 Any changes to Club Handicaps will be published by the Sailing Committee at least 30 minutes before the first race of a series or regatta.

27.4 These numbers will not be adjusted during a series or regatta (with the exception of the Mavourneen & Bery Malco Series or Championship Qualifiers) but will be subject to regular review.

28 DISCLAIMER OF LIABILITY

Competitors participate in the regatta entirely at their own risk. See rule 4, Decision to Race. The organizing authority will not accept any liability for material damage or personal injury or death sustained in conjunction with or prior to, during, or after the regatta.

29 INSURANCE

Each participating boat shall be insured with valid third-party liability insurance with a minimum cover of £ 3.000.000 per incident or the equivalent.



ST. CATHERINE'S SAILING CLUB

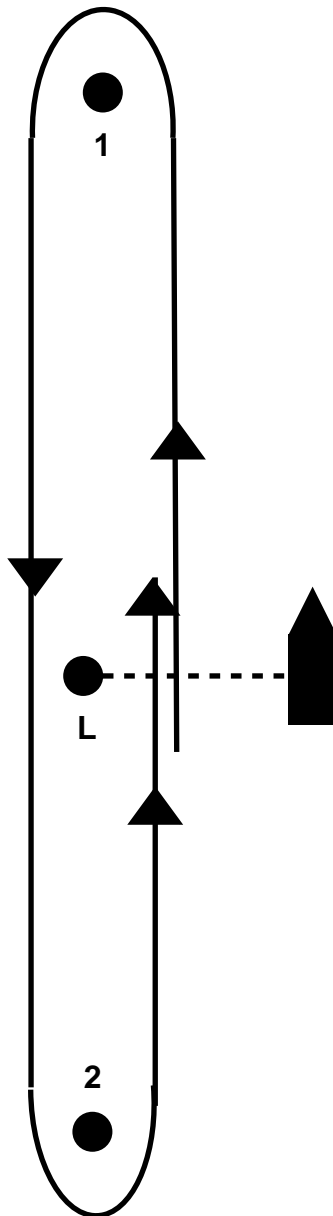
ATTACHMENT A

COURSE 1- FLAG NUMERAL ONE



A Windward-Leeward Course

Start – 1 – 2 – L x Nos Laps





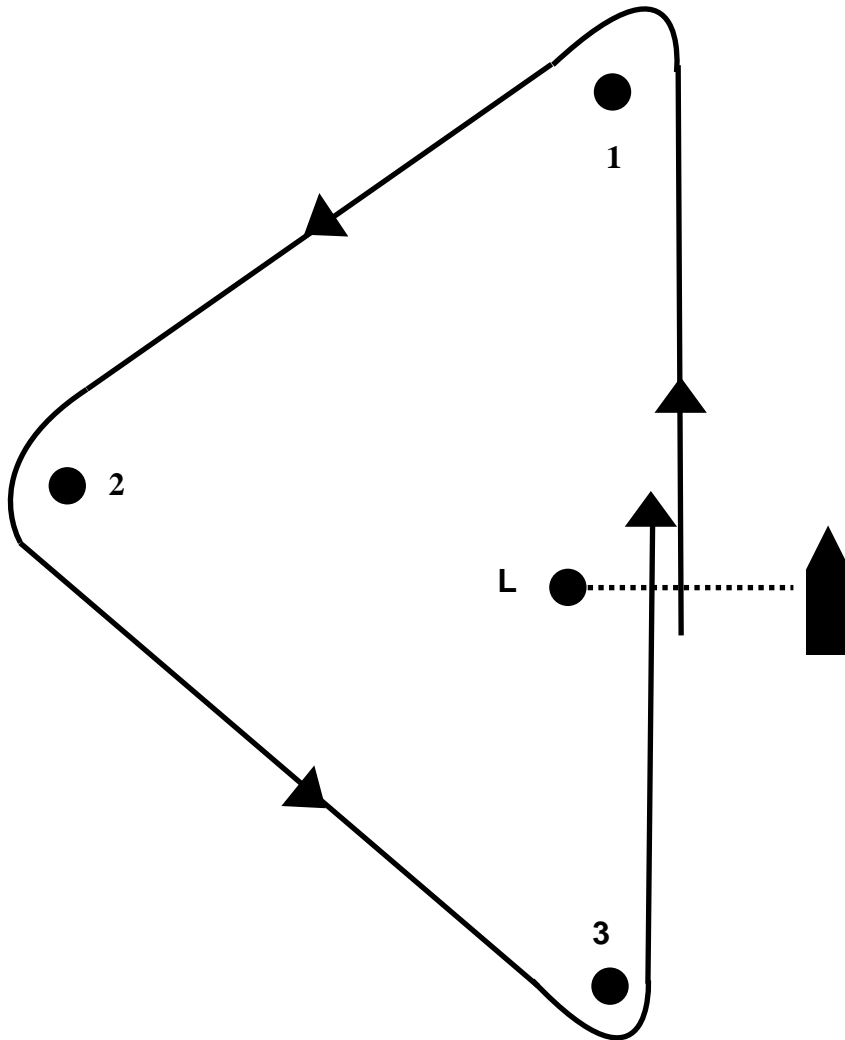
ST. CATHERINE'S SAILING CLUB

COURSE 2- FLAG NUMERAL TWO



A Triangle- Course

Start - 1 - 2 - 3 - L x No of Laps





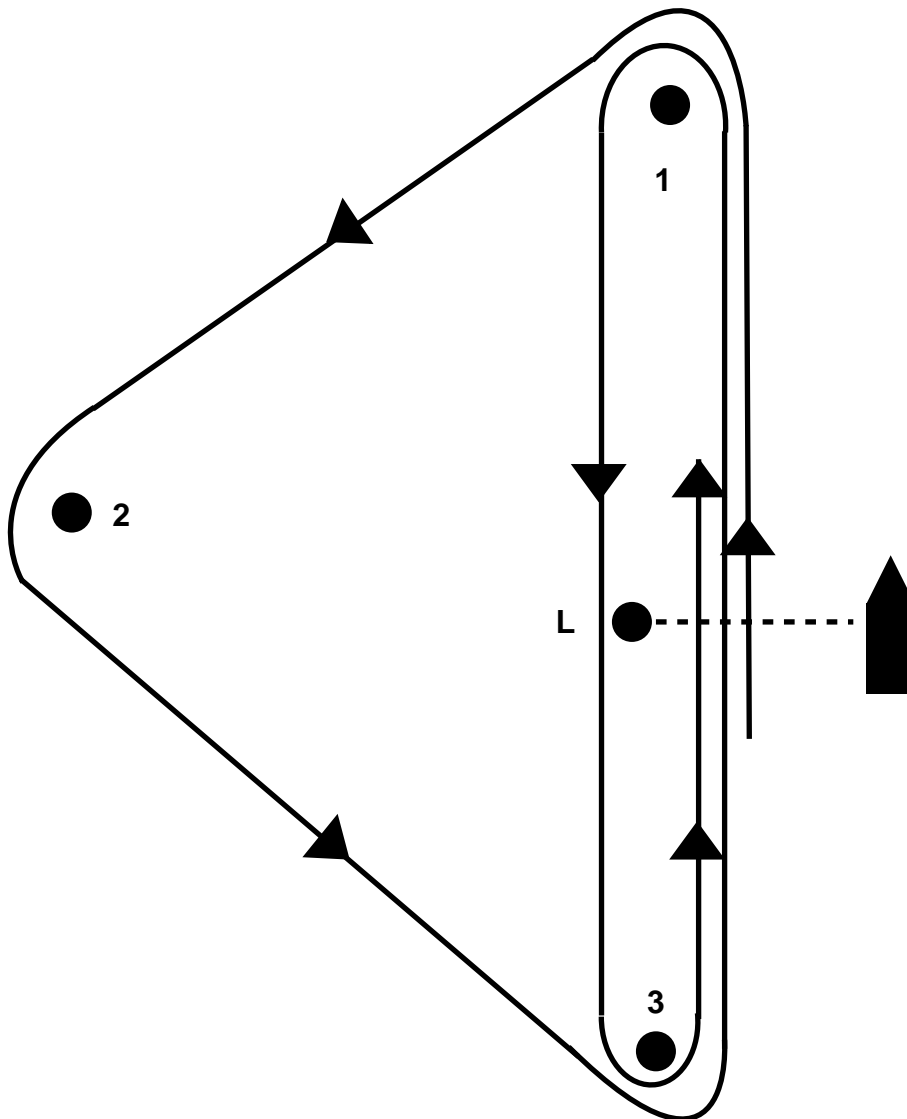
ST. CATHERINE'S SAILING CLUB

COURSE 3- FLAG NUMERAL THREE



A Triangle-Windward-Leeward Course

Start – 1 – 2 – 3 – 1 – 3 – L x Nos Laps





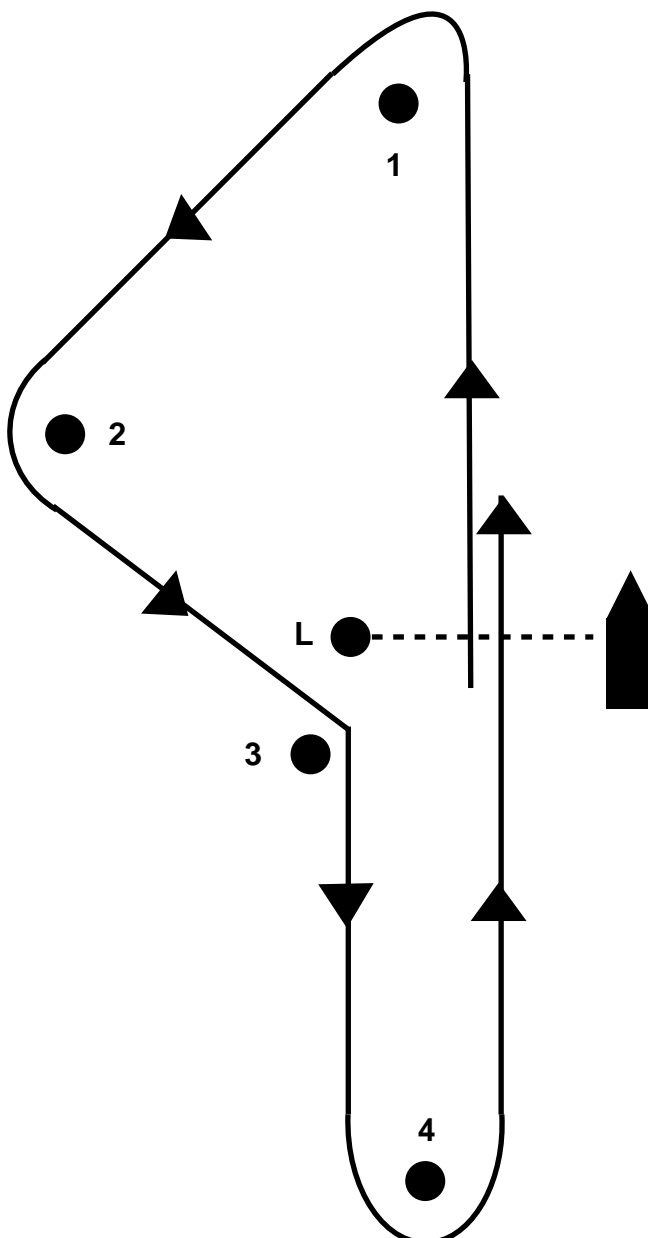
ST. CATHERINE'S SAILING CLUB

COURSE 4- FLAG NUMERAL FOUR



A 'q' Course

Start - 1 - 2 - 3 - 4 - L x Nos Laps





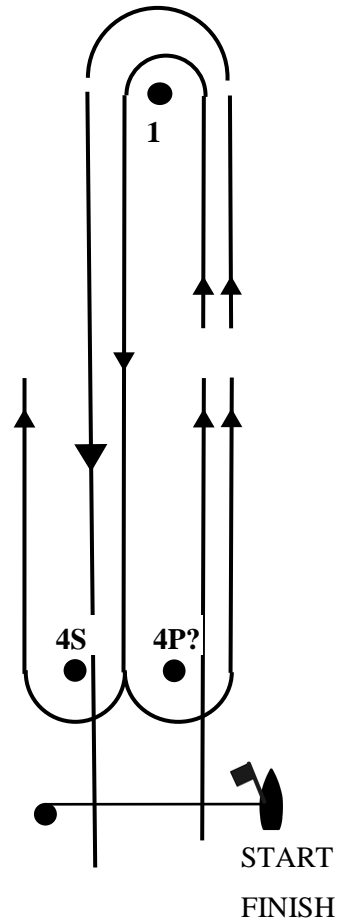
ST. CATHERINE'S SAILING CLUB

COURSE 5- FLAG NUMERAL FIVE



A Windward-Leeward with Gate Course

Start – 1 – 4 – 1 – 4 – Finish





ST. CATHERINE'S SAILING CLUB

ATTACHMENT B RACE MARKS

Mark Letters on Course Boards

B-Beach

E- East

H-Hell's Corner

L-Limit

N-North

W-Windward (not shown)

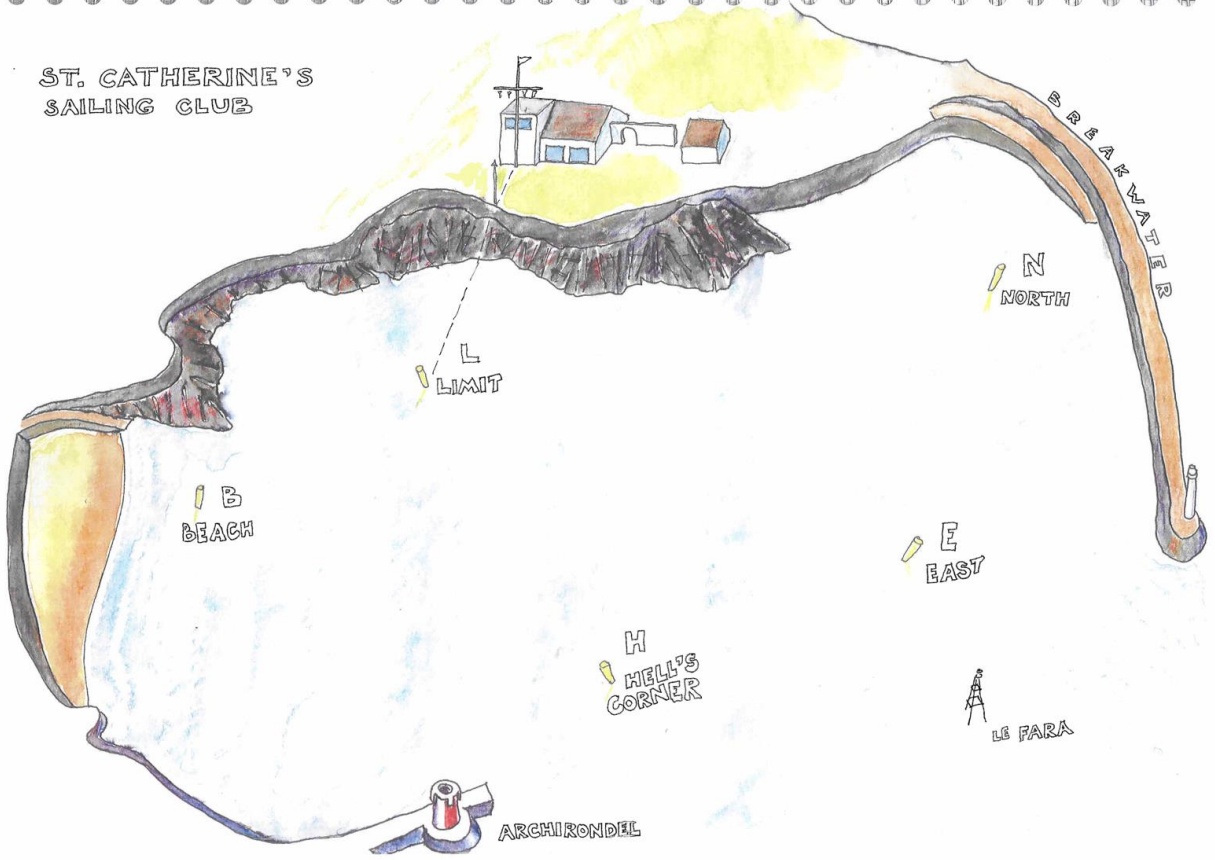
Z- Leeward (not shown)



ST. CATHERINE'S SAILING CLUB



ST. CATHERINE'S
SAILING CLUB





ST. CATHERINE'S SAILING CLUB

ATTACHMENT C PRIZES

| Prize Name | Race Type | Qualifying Races | Age Group Restrictions | Other Qualifications |
|------------------|--|--|------------------------|----------------------|
| Amy Cup | Open handicap series for boats with SCSC handicap number of Laser 4.7 or lower. | Amy Series | | |
| Ann Port Trophy | Open Handicap Series | Ann Port Series | | |
| ANRP Mug | Open handicap series for boats with SCSC handicap number higher than a Laser 4.7. | ANRP Series | | |
| Aurum Trophy | Open handicap tandem series | RNLI Pennant Race Bolitho Race Ann Port Series | | |
| Barts Bash Prize | Open Handicap Race | Barts Bash Race | | |
| Beagle Coins | Open Handicap Race | Beagle Race | | |
| Bel Val Cup | Open handicap series for boats with SCSC handicap number higher than a Laser 4.7. | Bel Val Series | | |
| Bery Malco Cup | Open handicap tandem series for boats with SCSC handicap number higher than a Laser 4.7. | ANRP Series Bel Val Series Verner Series Twilight Series Condor Series | | |
| Bob's Oar | Team Racing | Bob's Oar Team Race Series | | |
| Bolitho Cup | Open Handicap Race | Bolitho Race | | |



ST. CATHERINE'S SAILING CLUB

| Prize Name | Race Type | Qualifying Races | Age Group Restrictions | Other Qualifications |
|---------------------------|------------------------------------|-----------------------------------|--------------------------------------|--|
| Bolitho Plate | Open Handicap Race | Bolitho Race | Under 18 on 1st January current year | Awarded to the best placed competitor who has not also won the Bolitho Cup |
| Bolitho Shield | Optimist Class Tandem Race | Bolitho Race | | Awarded to best placed Optimist sailor who has not also won the Bolitho Cup |
| Bronze Prize | Open Handicap Series | BSG Series | | Sailor has recently learnt to sail and would like an introduction to racing. Sailor has taken part in SCSC sail training level 1-4, this year. |
| Buchanan Trophy | Open Handicap Series | Jubilee Regatta Series | Under 18 on 1st January current year | Awarded to the best placed competitor who has not also won the Jubilee Trophy |
| Carter Class Bell | Laser Radial Class Series | Laser Radial Class Championship | | |
| Carter Clipper | Laser Radial Class Tandem Series | Ann Port Series | | |
| CIYS Laser Shield | Laser Standard Class Series | Laser Standard Class Championship | | |
| CIYS Regatta Laser Shield | Laser Standard Class Tandem Series | Ann Port Series | | |
| Commodore's Cup | Open Handicap Series | Commodore's Regatta Series | | |



ST. CATHERINE'S SAILING CLUB

| Prize Name | Race Type | Qualifying Races | Age Group Restrictions | Other Qualifications |
|-------------------------|---|----------------------------|--------------------------------------|---|
| Commodore's Plate | Open Handicap Series | Commodore's Regatta Series | Under 18 on 1st January current year | Awarded to the best placed competitor who has not also won the Commodore's Cup |
| Commodore's Prize | | | | Discretionary award made by the Commodore at the Annual Regatta |
| Condor Shield | Open Handicap Series | Condor Series | | |
| Crews Challenge Trophy | Open Handicap Race | Crews Challenge Race | | Helm is usually a crew |
| Easter Egg | Open Handicap Series | Easter Regatta Series | | |
| Easter Egg – Junior | Open Handicap Series | Easter Regatta Series | Under 18 on 1st January current year | Awarded to the best placed competitor who has not also won the Open Easter Egg Race |
| Farley Cup | Open handicap series for boats with SCSC handicap number of Laser 4.7 or lower. | Farley Series | | |
| Feva Championship Prize | Feva Class series | Feva Class Championship | | |
| Feva Regatta Prize | Feva Class Tandem Series | Ann Port Series | | |
| Gala Cup | Open handicap series for boats with SCSC handicap number of Laser 4.7 or lower. | Gala Series | | |



ST. CATHERINE'S SAILING CLUB

| Prize Name | Race Type | Qualifying Races | Age Group Restrictions | Other Qualifications |
|-------------------------|-------------------------------|---|--|--|
| Gold Prize | Open Handicap Series | BSG Series | | Sailor is an experienced racer who has taken part in racing for some years and/or current or past Trophy winners |
| Hardy Cup | Laser Standard Class Racing | Hardy Cup Series | Helms aged over 18 1 st January | |
| Humphries Award | | | | Discretionary award made by Sailing Committee to Junior for outstanding Seamanship |
| Jubilee Mug | Open Handicap Series | Jubilee Regatta Series | | Awarded to best placed Optimist sailor who has not also won the Jubilee Trophy |
| Jubilee Trophy | Open Handicap Series | Jubilee Regatta Series | | |
| Junior Trophy | Open Handicap Tandem Series | Easter Regatta Liberation Day Trophy Commodore's Regatta Jubilee Regatta RNLI Pennant Bolitho Cup Ann Port Trophy | Under 16 on 1st January current year | |
| Laser 4.7 Regatta Prize | Laser 4.7 Class Tandem Series | Ann Port Series | | |



ST. CATHERINE'S SAILING CLUB

| Prize Name | Race Type | Qualifying Races | Age Group Restrictions | Other Qualifications |
|---|--|--|--------------------------------------|--|
| Liberation Day Plate | Open Handicap Tandem Series | Beagle Race Liberation Day Race | Under 18 on 1st January current year | Awarded to the best placed competitor who has not also won the Liberation Trophy |
| Liberation Day Stamps | Pursuit Race for boats with SCSC handicap number higher than a Laser 4.7. | Vega Slow Boat Pursuit Race | | |
| Liberation Day Trophy | Open Handicap Tandem Series | Beagle Race Liberation Day Race | | |
| Little Hardy Cup | Optimist Dinghies Class Racing | Little Hardy Series | Under 16 on 1st January current year | |
| Louise Perkins Double Handed Dinghy Cup | Open Handicap Series for Double Handed dinghies | Double Handed Series | | |
| Macready Cup | Laser Radial Class Racing | Macready Cup Series | Under 18 on 1st January current year | |
| Marett Trophy | Open Handicap Race | Marett Race | | Double handed boats sailed single handed |
| Mavourneen Shield | Open handicap tandem series for boats with SCSC handicap number of Laser 4.7 or lower. | Amy Series Gala Series Farley Series Twilight Series Condor Series | | |
| Millennium Cup | Optimist Class Tandem Series | Ann Port Series | | |



ST. CATHERINE'S SAILING CLUB

| Prize Name | Race Type | Qualifying Races | Age Group Restrictions | Other Qualifications |
|-----------------------------|---|--------------------------------|--------------------------------------|---|
| Mini Moisan Trophy | Pursuit Race for boats with SCSC handicap number higher than a Laser 4.7. | Mini Moisan Pursuit Race | | |
| Moisan Keg of Ale Trophy | Pursuit Race for boats with SCSC handicap number of Laser 4.7 or lower. | Moisan Keg of Ale Pursuit Race | | |
| Muhleman Mug | Open Handicap Race | Muhleman U21 Race | Under 21 on 1st January current year | |
| Oppie Championship Prize | Oppie Class Series | Oppie Class Championship | | |
| Optimist Championship Prize | Optimist Class Series | Optimist Class Championship | | |
| P & T Cup | Open Handicap Race | His & Hers Race | | Male & female each helm one lap in a two lap race |
| Peace Cup | Optimist Class Race | Peace Cup Race | Under 13 on 1st January current year | |
| Pico Championship Prize | Pico Class Series | Pico Class Championship | | |
| Pico Regatta Class Prize | Pico Class Tandem Series | Ann Port Series | | |
| Pippa-Marie Cup | Open Handicap Tandem Series | Ann Port Series | | Open to all boats without a tandem class race |
| Plaything Bowl | Topper Class Tandem Series | Ann Port Series | | |
| Remnants Championship Prize | Open Handicap Series | Open Handicap Championship | | Open to all boats without a class race |



ST. CATHERINE'S SAILING CLUB

| Prize Name | Race Type | Qualifying Races | Age Group Restrictions | Other Qualifications |
|--------------------------|-----------------------------------|------------------------------|--------------------------------------|--|
| Rhys Perkins Dayboat Cup | Open Handicap Series for Dayboats | Dayboat Series | | |
| RNLI Junior Pennant | Open Handicap Race | RNLI Pennant Race | Under 18 on 1st January current year | Awarded to the best placed competitor who has not also won the Open RNLI race |
| RNLI Pennant | Open Handicap Race | RNLI Pennant Race | | |
| Roger's Trophy | Optimist Class | Off Island event | | Best result by an Optimist sailor at an off island event. |
| Sayers Cup | | | | Discretionary award made by Sailing Committee to most improved sailor. |
| Silver Prize | Open Handicap Series | BSG Series | | Sailor knows how to sail and has some experience of racing. Has yet to win a trophy or main club race. |
| St HYC - CIYS Trophy | Laser 4.7 Class Series | Laser 4.7 Class Championship | | |
| Streaker Cup | Streaker Class Tandem Series | Ann Port Series | | |
| Summer Evening Prize | Open Handicap Series | Summer Evening Series | | |
| Swan Verner Cup | Open Handicap Race | Swan Verner Race | | Open only to single handed dinghies |



ST. CATHERINE'S SAILING CLUB

| Prize Name | Race Type | Qualifying Races | Age Group Restrictions | Other Qualifications |
|-----------------|---|---|--------------------------------------|--|
| Thyra's Bowl | Open Handicap Race | Ladies Race | | Open only to female helms |
| Topsy Trophy | Topper Class Series | Topper Class Championship | | |
| Trophy De Paris | Oppie Class Series | Regatta Oppie Series | | |
| Twilight Trophy | Open Handicap Series | Twilight Series | | |
| U21 Mug | Open Handicap Tandem Series | Easter Regatta Liberation Day Trophy Commodore's Regatta Jubilee Regatta RNLI Pennant Bolitho Cup Ann Port Trophy | Under 21 on 1st January current year | |
| Vega Coins | Pursuit Race for boats with SCSC handicap number of Laser 4.7 or lower. | Vega Fast Boat Pursuit Race | | |
| Verner Cup | Open handicap series for boats with SCSC handicap number higher than a Laser 4.7. | Verner Series | | |
| Veterans Trophy | Open Handicap Race | Veterans race | Over 45 on 1st January | Must be sailed in single handed dinghies |